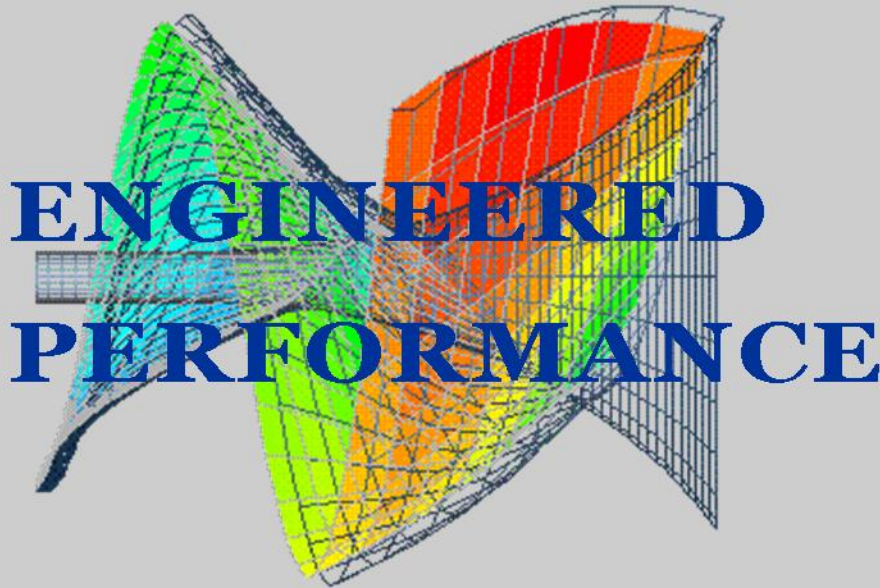


# intMPE



International Mineral Processing Equipment



**Industrial Series**

**API-610 & ANSI B73.1M**



*intMPE*

International Mineral Processing Equipment  
A Division of Canamera Enterprises Inc.



# intMPE MPCP, MP, MPGQ, MPDG, MPDV Submersible Pumps

intMPE Submersible Pumps utilize are ISO-9002 International, latest technology pumps suitable for applications such as; Raw Water, Industrial Waste Water, Sewage & Dewatering Services.

The pumps can be installed transportable and fixed.

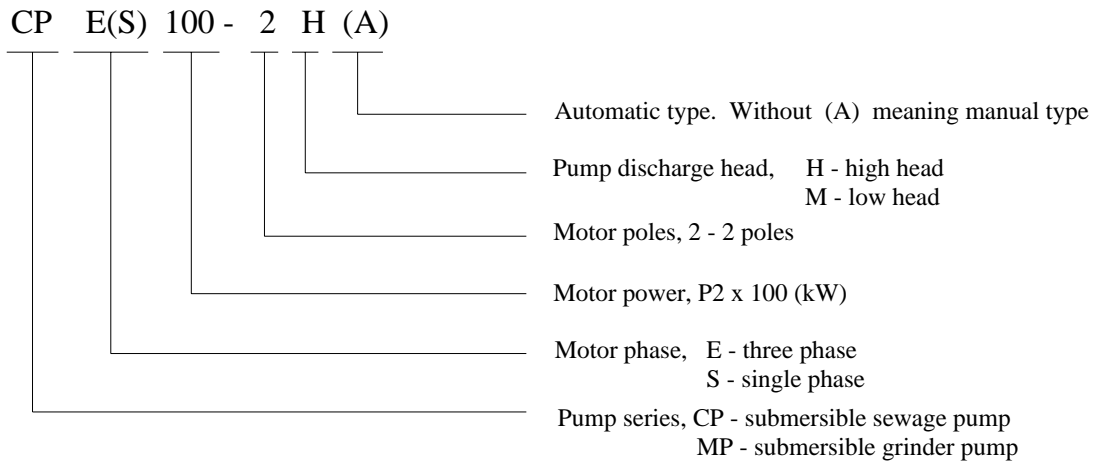
intMPE Submersible Pumps Models are as follows; **MPCP** is with open channel impeller for non-clog service. **MP & MPDG** is with rotary lobe and stationary ring before impeller for Grinder Service. **MPGQ** is with strainer for dirty water. **MPDV** is with vortex impeller best suited for waste water with large solids.

## intMPE Features

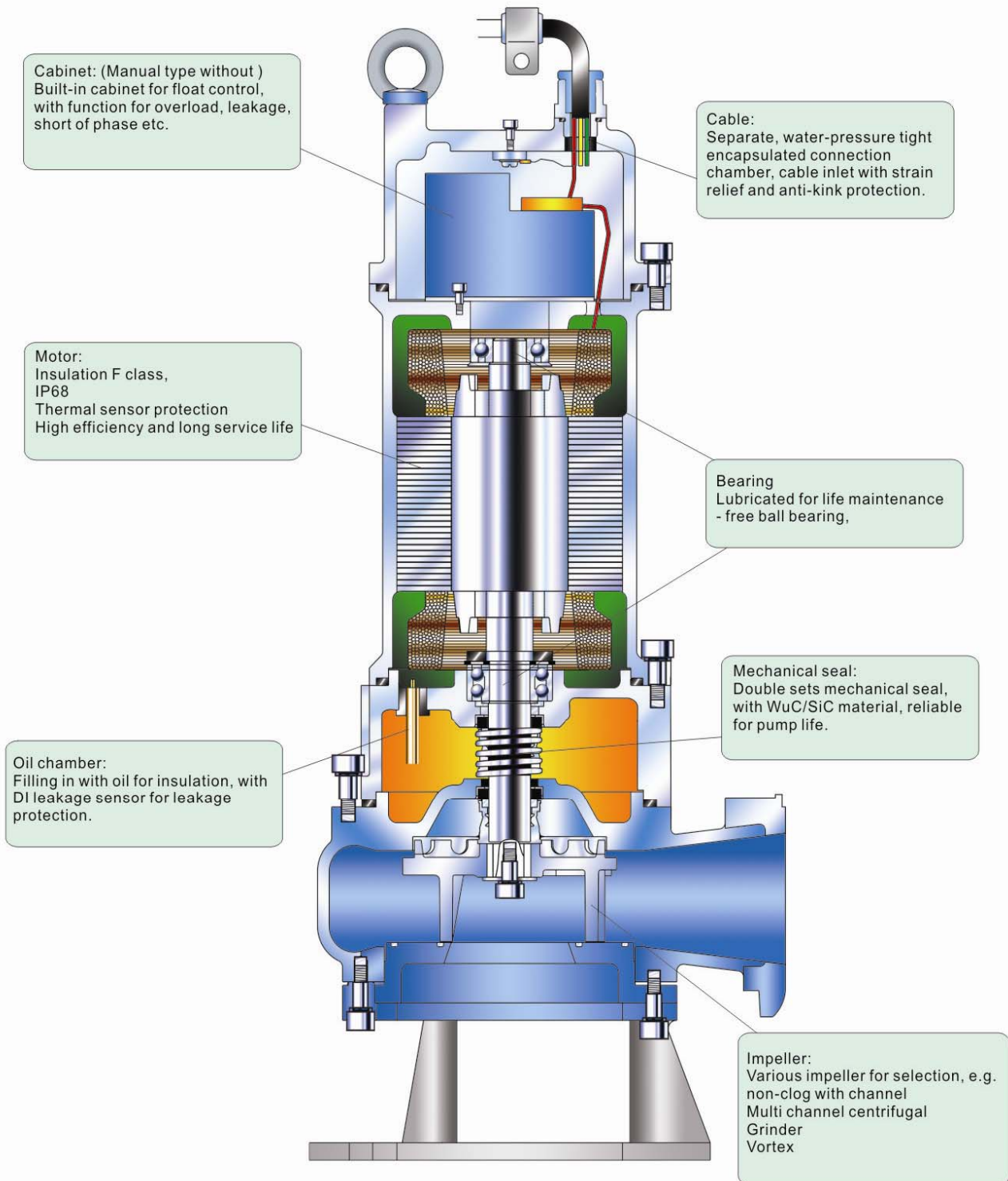
Name	Description
Motor	IP68, F class insulation, 50 or 60 Hz, single or three phase Thermal sensor for each phase
Impeller	Open channel or vortex impeller, static and dynamic balance. For grinder pumps, there a rotary lobe before the impeller.
Mechanical seal	Double high quality sealing units using tungsten/silicon carbide seal faces which seal effectively regardless of rotation. They are also resistant to temperature shock.
Bearing	Lubricated for maintenance free operation. Generally NSK C3 type. SKF is optional.
Shaft	Strict static and dynamic balancing is done on all pumps to vibration free operation.
Cable	Separate, water – pressure tight encapsulated connection chamber, cable inlet with strain relief and anti – kink protection.
Protection	With DI sensor located in oil chamber, we detect any moisture before it enters into the motor chamber from the shaft seal. A timely warning is given and or shut down.

Standard Materials:

Component	Material
Motor casing	Cast iron GG25
Volute	Cast iron GG25
Bottom plate	Cast iron GG25
Shaft	Stainless steel SS420
Impeller	Cast iron GG25
Mechanical seal	WuC / SiC
Fasteners	Galvanized steel
Cable	H07 RN – F
O-ring	H07 RN – F



# Sectional Drawing of intMPE Submersible Pumps

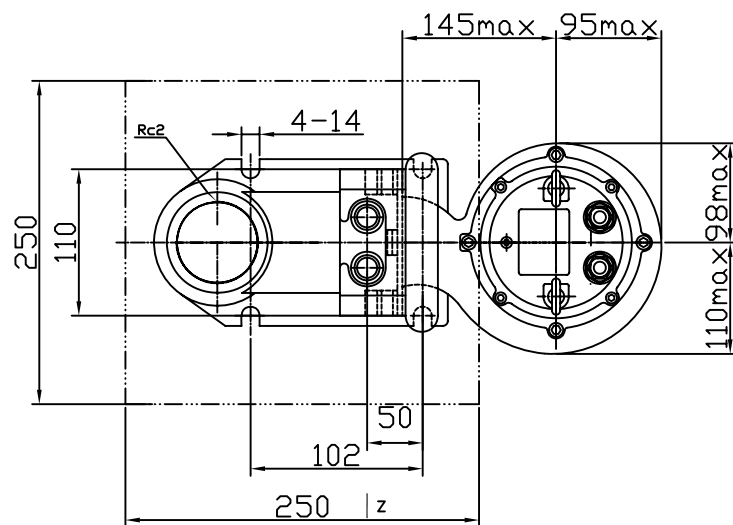
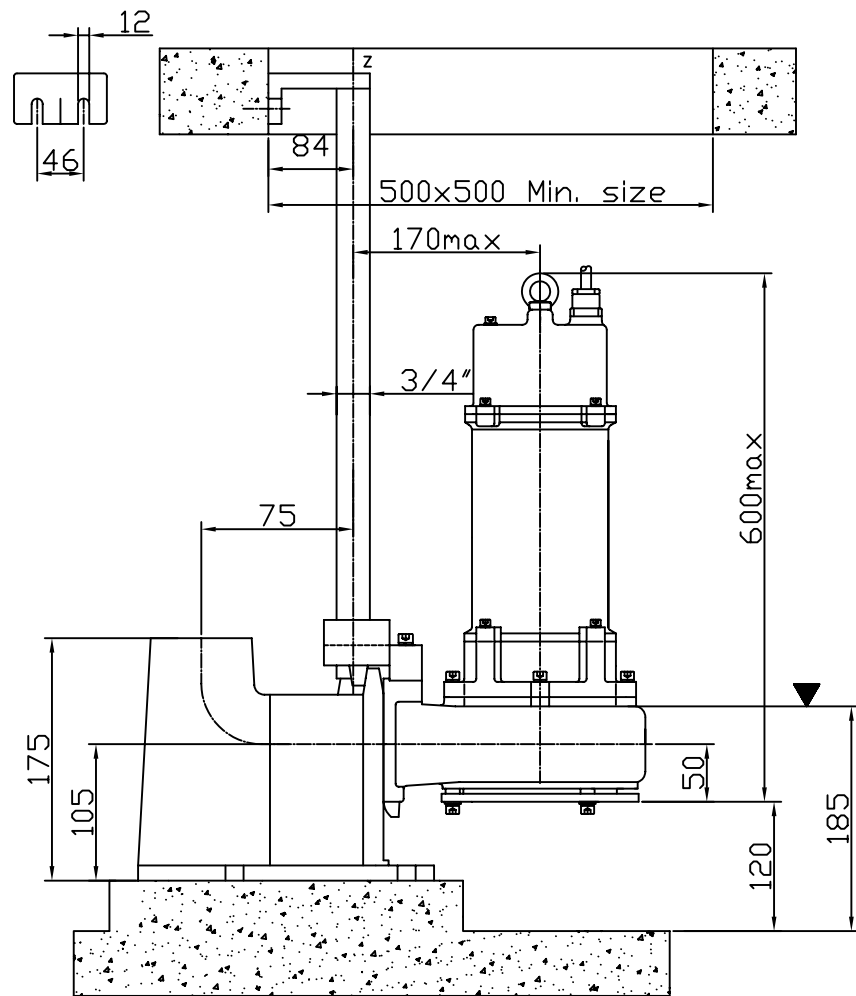


## MPMP series submersible - grinder pump technical data

Type	Flow (m3/h)	Head (m)	Power (kW)	Current (A)	Speed (rpm)	Phase	Outlet (mm)	Wt. (kg)
MPE75-2H(A)	3.5	18	0.75	2.9	2850	3	32	30
MPS75-2H(A)				5.65		1		
MPE100-2H(A)	4	20	1.0	3.2		3		32
MPS100-2H(A)				7.5		1		
MPE150-2H(A)	7	20	1.5	4.3		3		33
MPS150-2H(A)				9.5		1		
MPE220-2H(A)	9	25	2.2	4.9		3	50	52
MPE300-2H(A)	9	27	3.0	6.4				52
MPE400-2H(A)	10	38	4.0	8.2			75	
MPE550-2H	25	28	5.5	12			65	185
MPE750-2H	25	34	7.5	16				

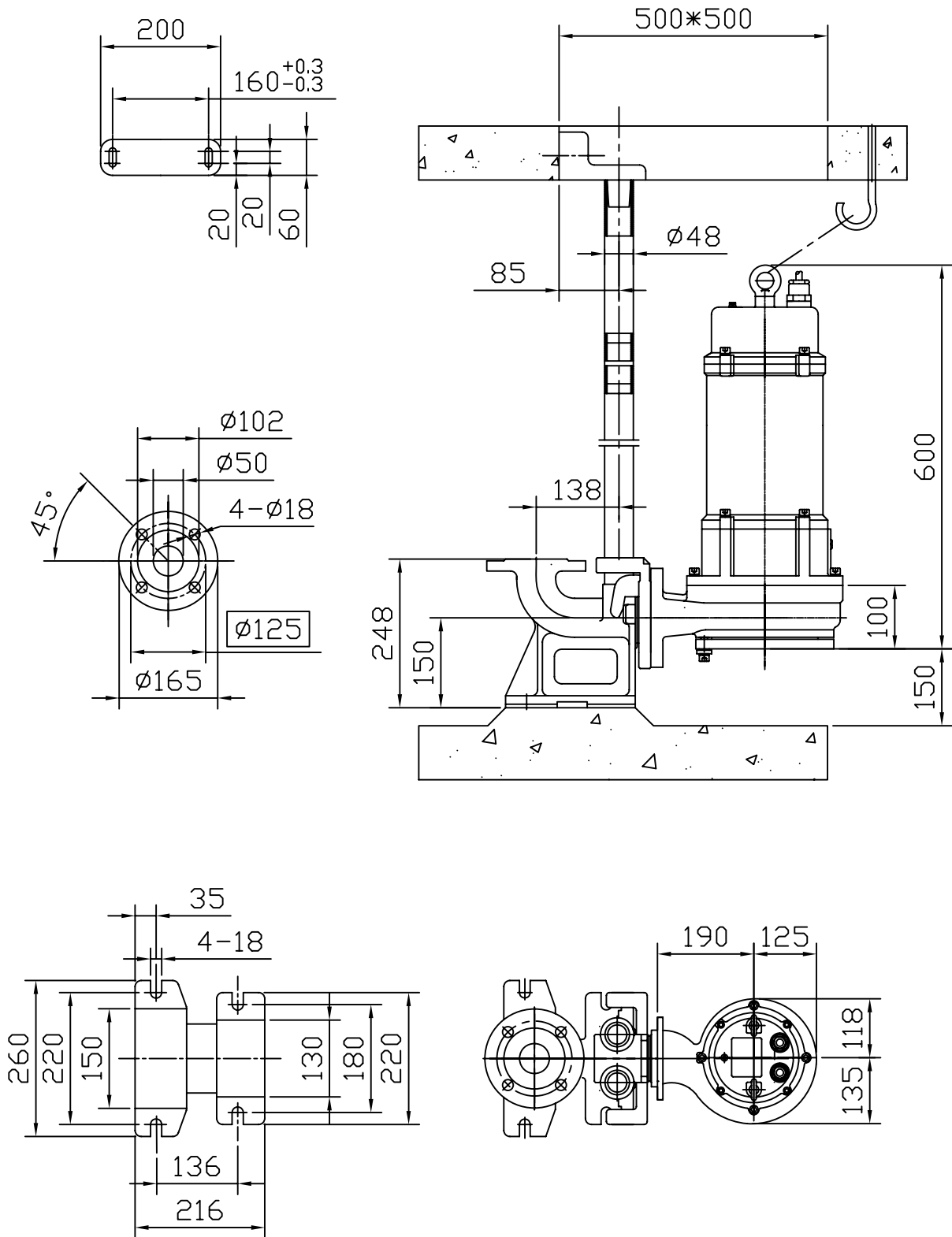
**Note: Current are in power 380v/3ph/50Hz or 220v/1ph/50Hz**



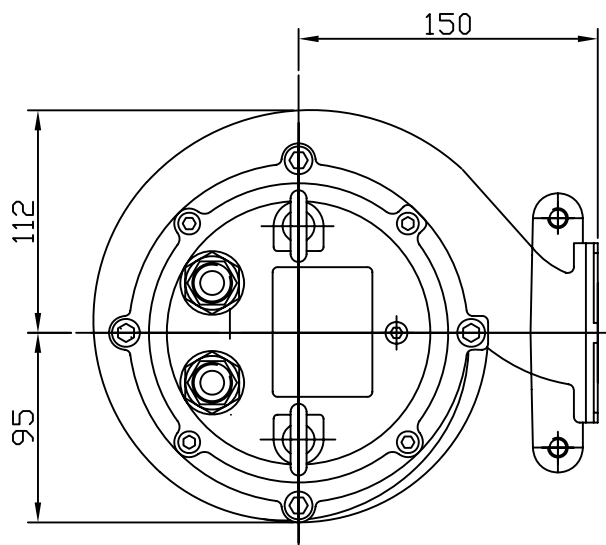
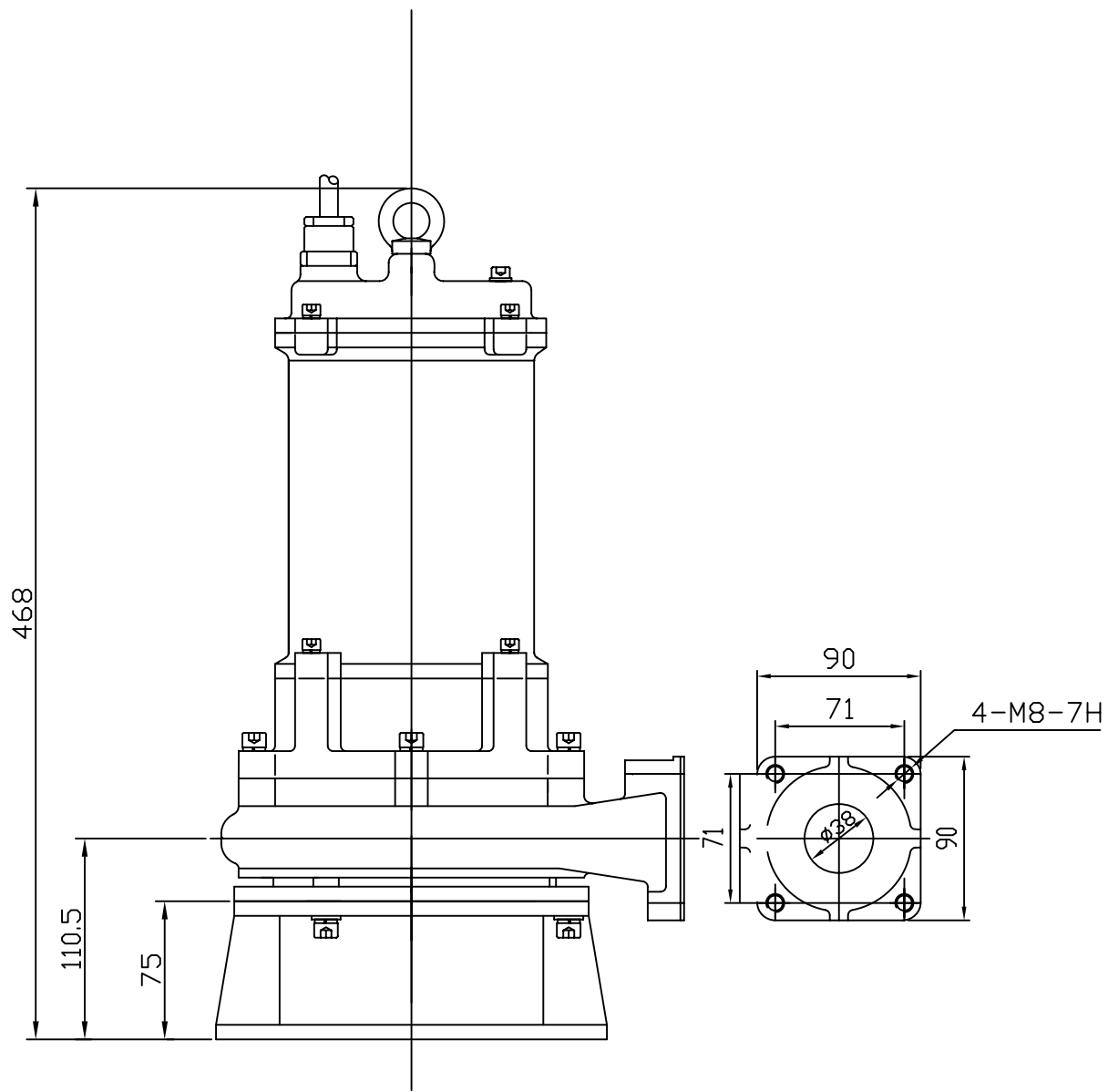


50GAK for pump  
 CPE75-2H, CPE100-2H, CPE150-2H  
 MPE75-2H, MPE100-2H, MPE150-2H  
 MPE220-2H, MPE300-2H,

# 50GAK

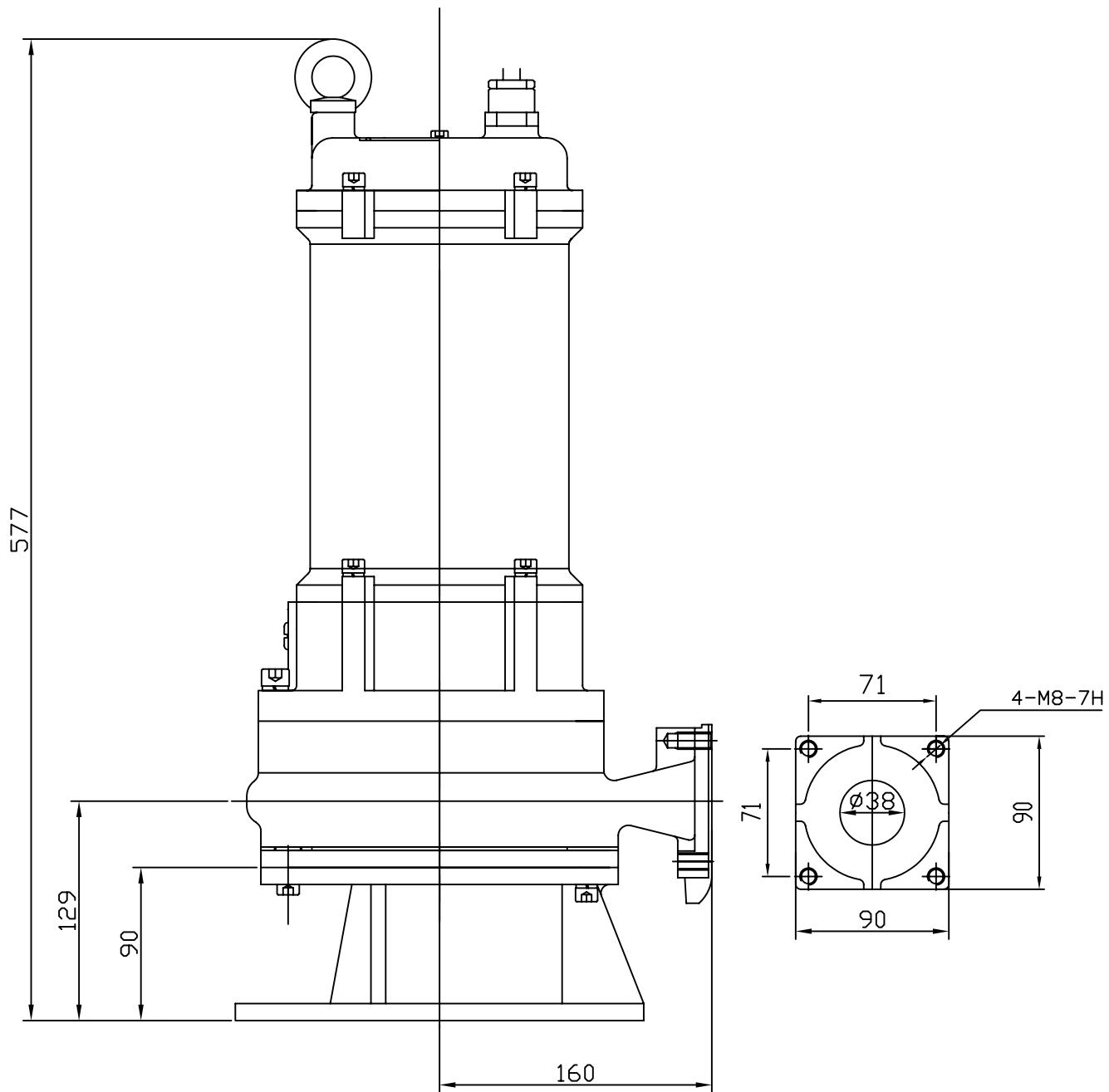


# MPE 400-2H

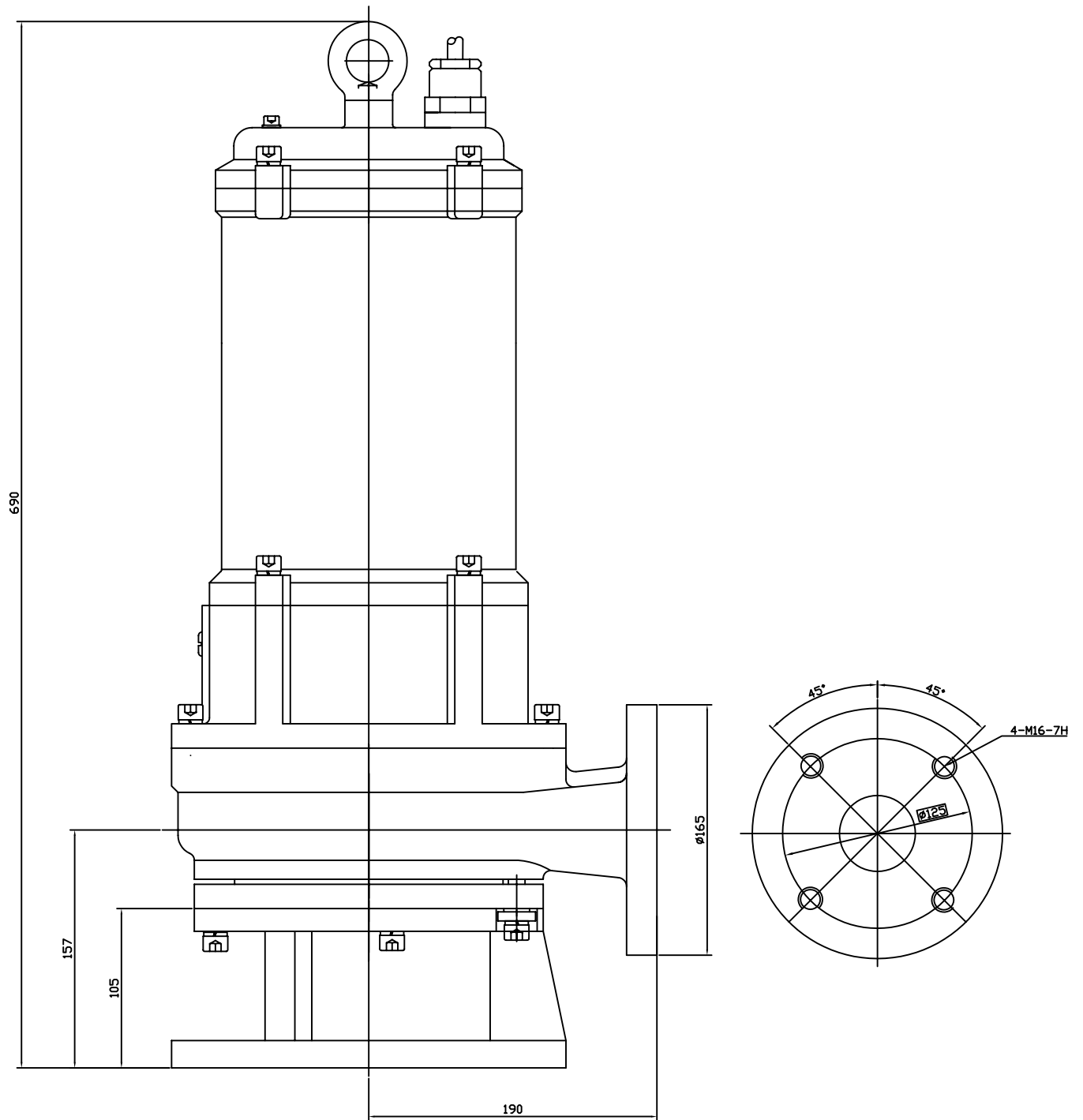


MPE100-2H, MPE150-2H  
Outline Dimension

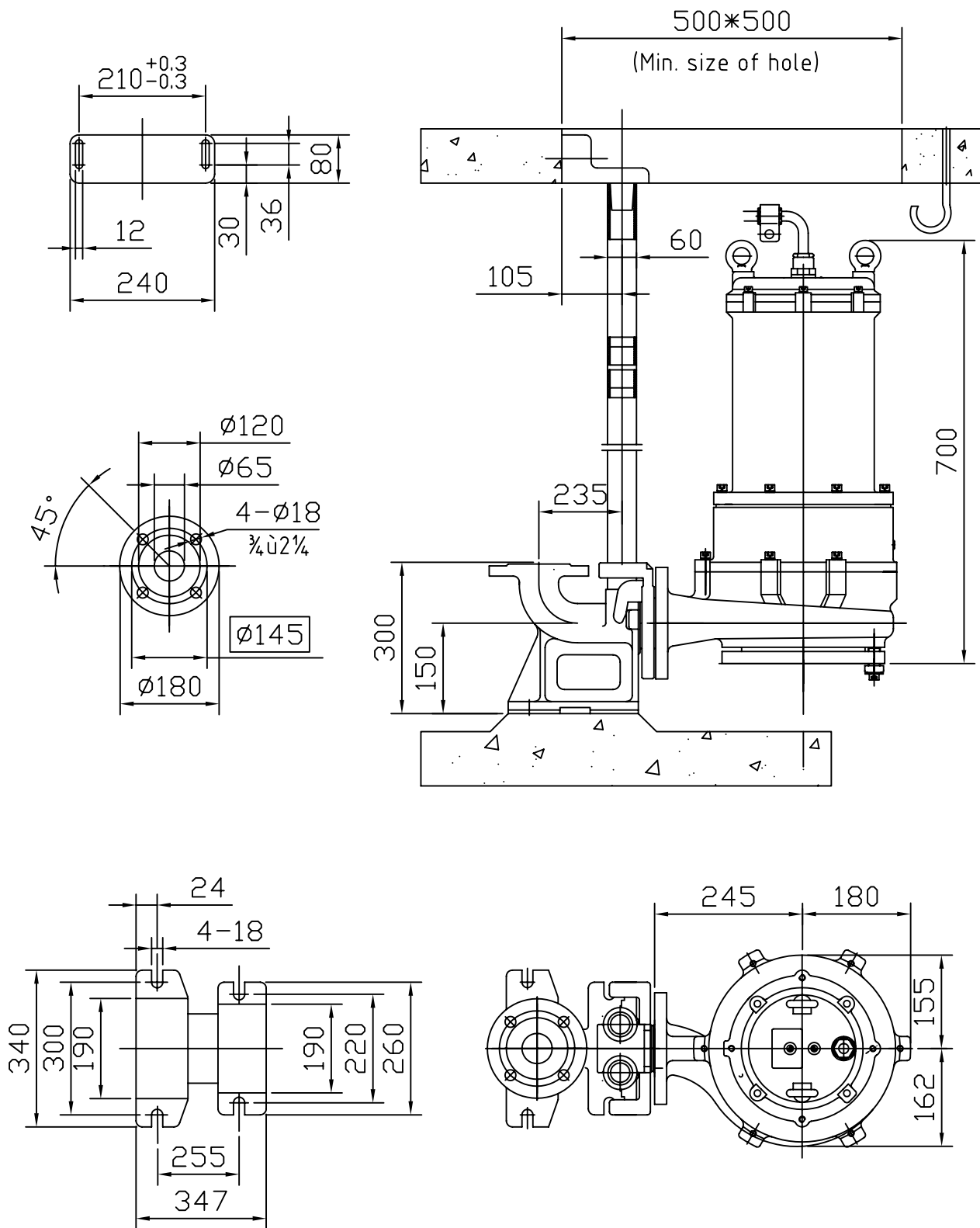




MPE220-2H, MPE300-2H  
 Outline Dimension

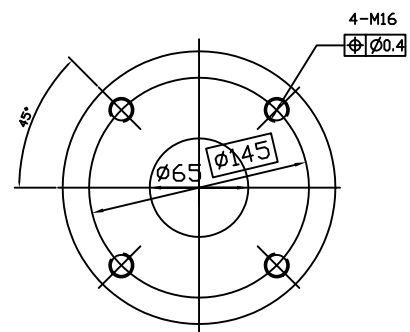
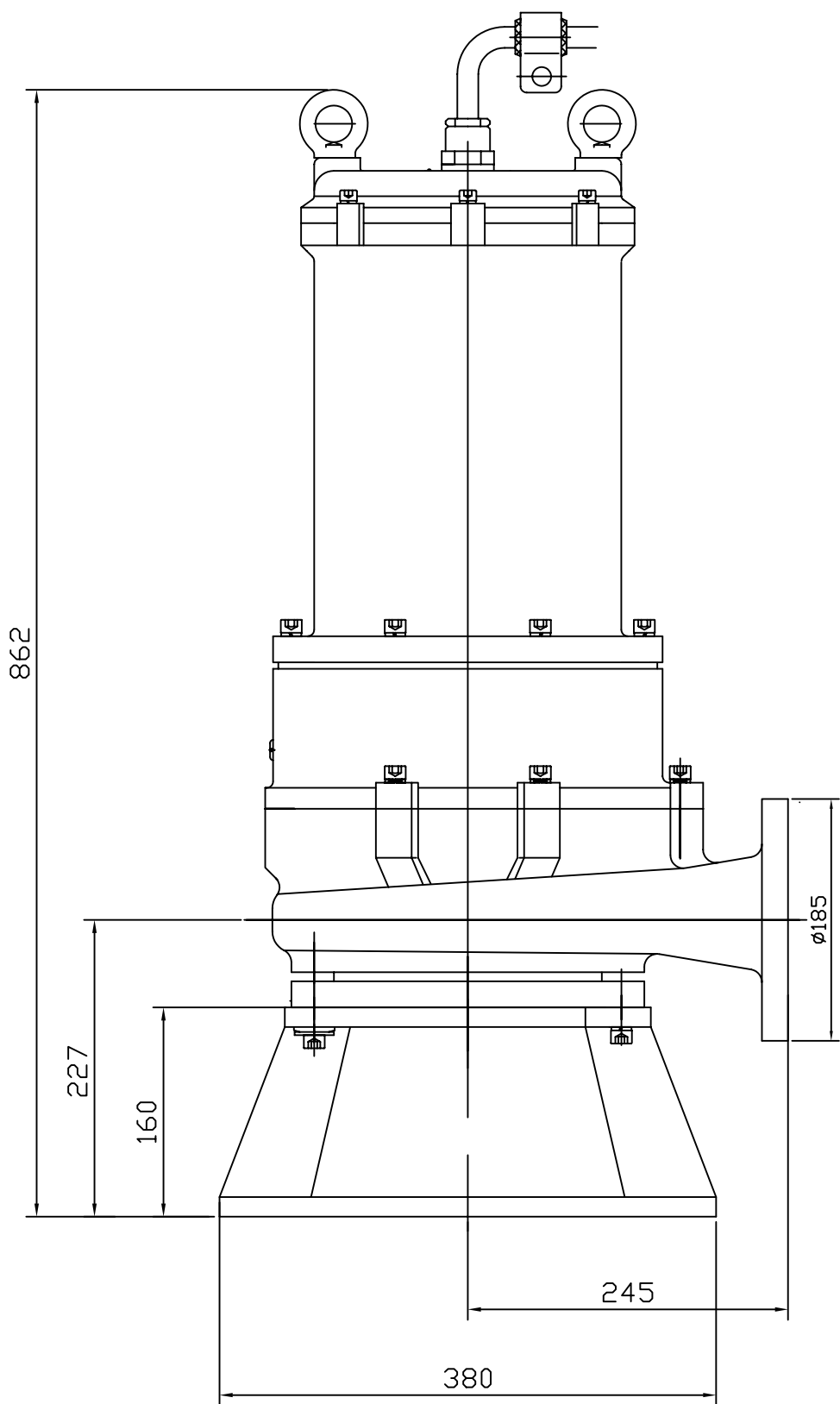


MPE400-2H  
Outline Dimn.



DN65 Auto-coupling system for pump

MPE550-2H, MPE750-2H



MPE550-2H, MPE750-2H  
Outline dimension